

Whitehouse School

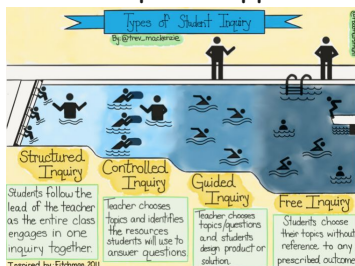


DISTRICT STRATEGIC PLAN GOALS

Inquisitive Learning

"The Inquiry-Based Learning Model emerged in the 1960s, during the "discovery learning" movement and relies upon the idea that individuals are able to learn by investigating scenarios and problems, and through social experiences. Rather than having to memorize information from printed materials, instructors encouraged their students to conduct investigations that would satisfy their curiosity, help them broaden their knowledge base, and develop their skills and mental frames."

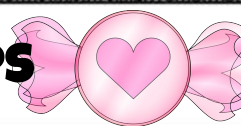
[CLICK HERE](#) to read the full article written by Christopher Pappas



"Think about the last time a book, movie, or conversation sparked your curiosity. When something ignites your curiosity, regions of your brain associated with reward, memory, and motivation actually "fire up" with activity. In other words, curiosity can be a great motivator that makes the brain sincerely want to learn."

[CLICK HERE](#) to read the full article:
"5 Strategies to Inspire Curiosity in Students"
by Tracy Ostwald Kowald

PARTNERSHIPS



Virtual Field Trips

Amid these challenging times, many of our traditional partnerships and field trips are on hiatus, so as a school, we have embraced many opportunities that are offered virtually. This year, after a teacher takes his/her class on a virtual field trip, he/she fills out a reflection survey to determine if students found it rewarding, and if the trip might even be useful when life returns to normal. (Click on the bus for fun trip examples!)

Virtual Field Trips



SOCIAL AWARENESS



We are Cubs of Character!!!



February is **CARING** month at WHS!!!
We are practicing *caring* gestures in school.
Please continue to discuss acts of good character with your child as he/she earns your permission to shade in pieces from his/her bucket filler puzzle. At this time, bucket puzzle sheets are now optional. Please click [here](#) to download the *Caring* bucket.

Choose CARING!!!